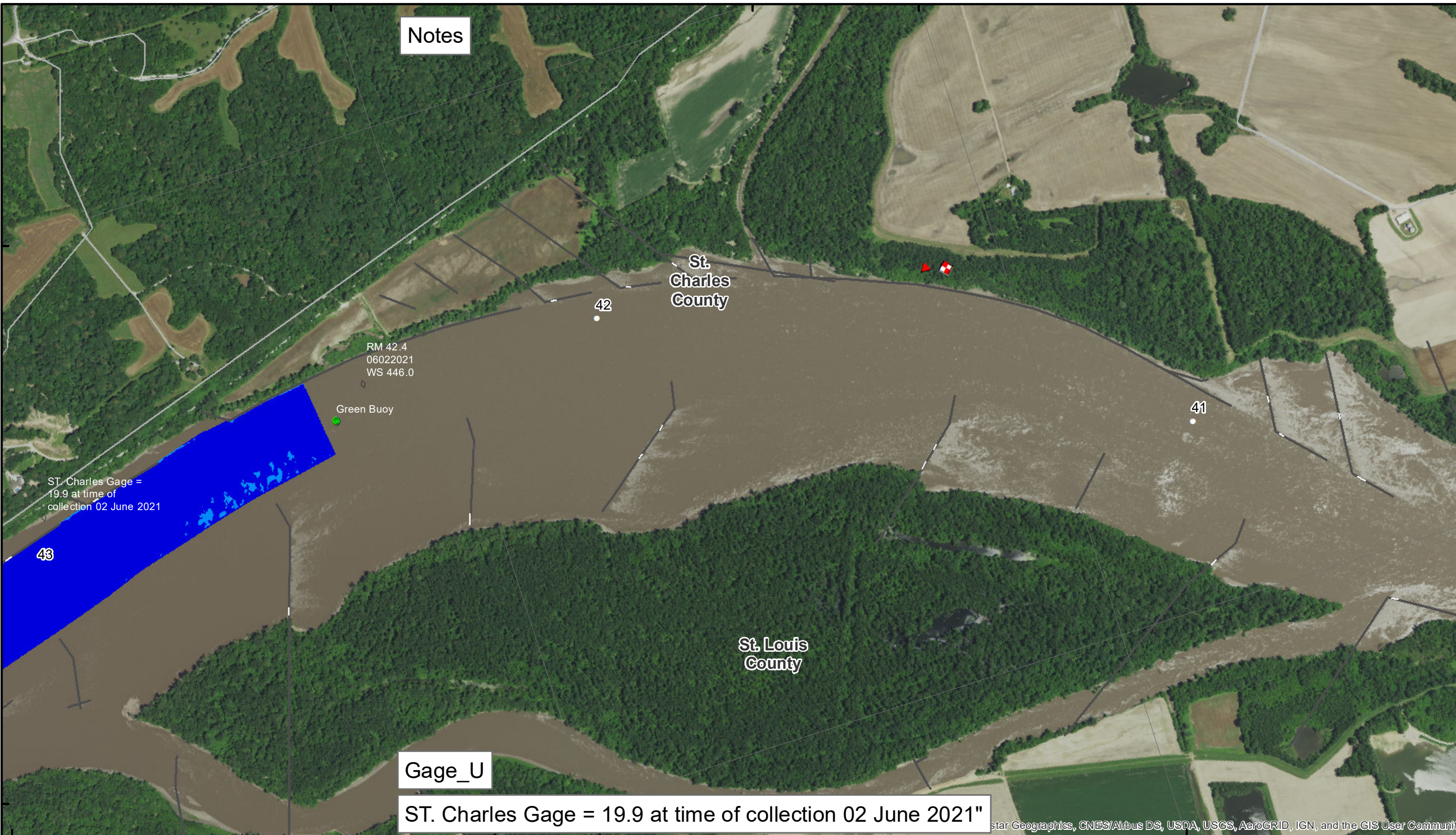


90°38'W 38°41'N 90°37'W



ST. Charles Gage = 19.9 at time of collection 02 June 2021

RM 42.4
06022021
WS 446.0

Green Buoy

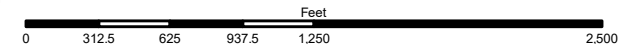
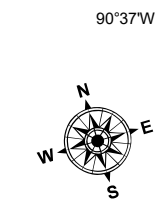
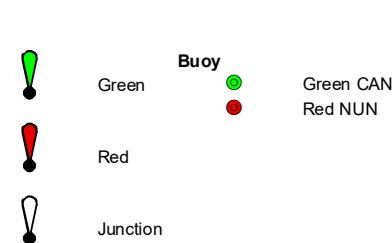
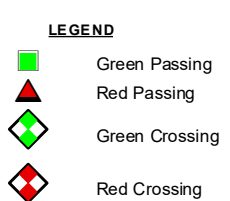
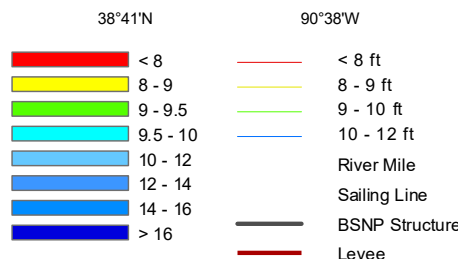
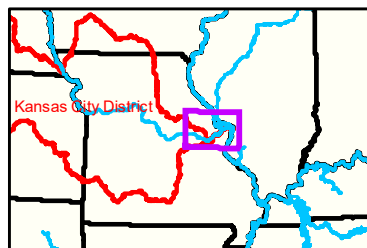
St. Charles County

St. Louis County

Gage_U

ST. Charles Gage = 19.9 at time of collection 02 June 2021"

Star Geographics, CNES/Airbus DS, USDA, USGS, AeroGRID, IGN, and the GIS User Community



NOTES:
Horizontal Coordinate System:
World Geodetic System of 1984 (WGS84), projected to the Universal Transverse Mercator (UTM) Zone 15 North. Distance units in U.S. Survey Feet

Vertical Datum:
Soundings are shown in feet and indicated depths are referenced to water surface at time of collection.

The information depicted on this map represents the results of a survey conducted on the date indicated and can only be considered to represent the general condition existing at that time.

The location of navigation aids are based on and provided by the U.S. Coast Guard.

Notes



DISCLAIMER: The U.S. Army Corps of Engineers (USACE) provides this information as a service to the public. It is not intended for use in any legal proceeding. The USACE makes no warranty, express or implied, regarding the accuracy, reliability, or completeness of the information. The USACE is not responsible for any errors or omissions in this information. The USACE is not liable for any damages, including consequential damages, arising from the use of this information. The USACE is not responsible for any actions taken based on this information. The USACE is not responsible for any actions taken based on this information.

KANSAS CITY DISTRICT MISSOURI RIVER AREA OFFICE	
Submitted By:	MRAO
Reviewed By:	MRAO
Checked By:	MRAO
Approved:	

Survey Information
MO_01_LMR
MO_01_LMR_20210602_CS_42_5_44_5_SORT
02 June 2021

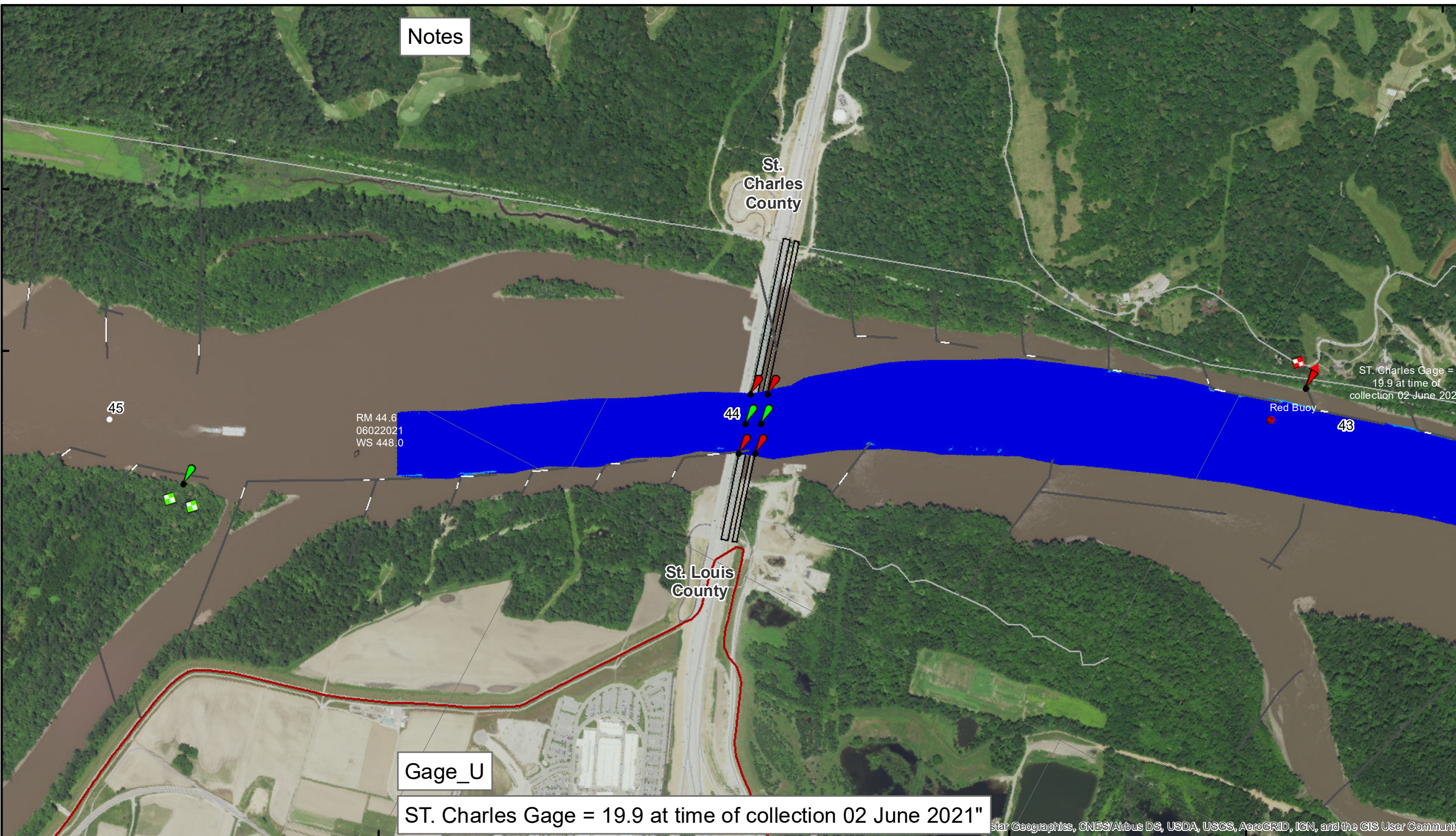
Sheet Number
19 of 46

90°41'W

90°40'W

38°41'N

90°39'W



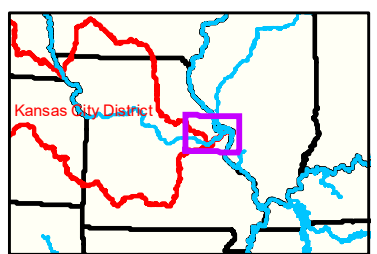
Notes

Gage_U

ST. Charles Gage = 19.9 at time of collection 02 June 2021"

RM 44.6
06022021
WS 448.0

ST. Charles Gage =
19.9 at time of
collection 02 June 2021



LEGEND

< 8	< 8 ft	Green Passing	Green	Green CAN
8 - 9	8 - 9 ft	Red Passing	Red	Red NUN
9 - 9.5	9 - 10 ft	Green Crossing	Junction	
9.5 - 10	10 - 12 ft	Red Crossing		
10 - 12	River Mile			
12 - 14	Sailing Line			
14 - 16	BSNP Structure			
> 16	Levee			

Scale: 0 312.5 625 937.5 1,250 2,500 Feet

NOTES:
Horizontal Coordinate System:
World Geodetic System of 1984 (WGS84), projected to the
Universal Transverse Mercator (UTM) Zone 15 North.
Distance units in U.S. Survey Feet

Vertical Datum:
Soundings are shown in feet and indicated depths
are referenced to water surface at time of collection.

The information depicted on this map represents the results of a survey
conducted on the date indicated and can only be considered
to represent the general condition existing at that time.

The location of navigation aids are based on and provided by
the U.S. Coast Guard.



DISCLAIMER: The U.S. Army Corps of Engineers provides this information for informational purposes only. It is not intended for use in navigation or other critical operations. The Corps makes no warranty, express or implied, regarding the accuracy, completeness, or timeliness of the information provided. The user assumes all liability for any errors or omissions. The Corps is not responsible for any damage or loss resulting from the use of this information.

KANSAS CITY DISTRICT MISSOURI RIVER AREA OFFICE			
Submitted By:	MRAO	Reviewed By:	MRAO
Documented:		Checked By:	MRAO
Approved:			

Survey Information
MO_01_LMR
MO_01_LMR_20210602_CS_42_5_44_5_SORT
02 June 2021

Sheet Number
20 of 46